

RAWVISION

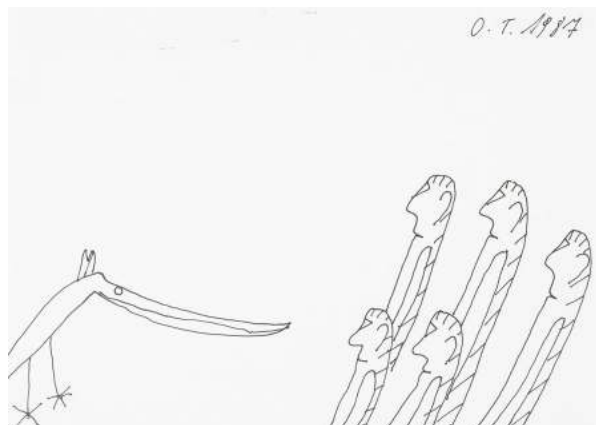
W E E K L Y

October 21 2022 #293

GALERIE GUGGING:

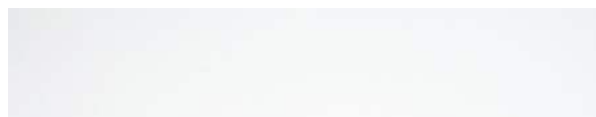
L. E. & O. T., LOYS EGG &
OSWALD TSCHIRTNER

October 20, 2023 – February 19, 2023



Oswald Tschirtner, Untitled, 1987. Felt-tip pen on paper, 21 x 29.7 cm. Copyright Privatstiftung - Künstler aus Gugging

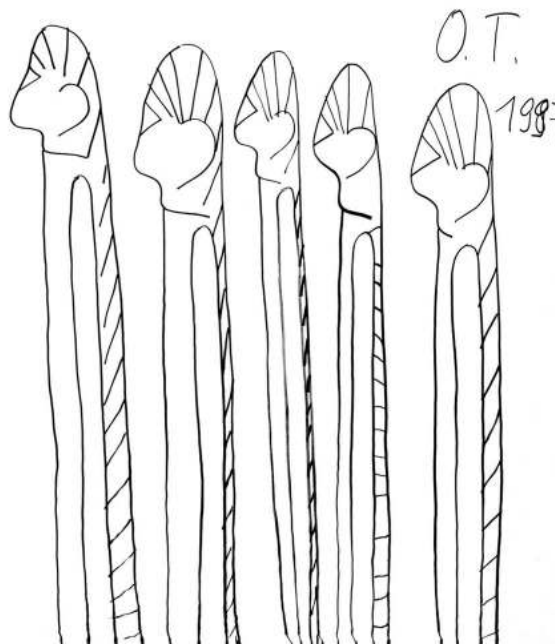
The *galerie gugging* invites you to a summit meeting of two masters of reduction with the new exhibition “L.E. & O.T.”, in which the works of the world-famous *Gugging Artist* [Oswald Tschirtner](#) encounter the sculptures of [Loys Egg](#). The resulting dialogue creates a joyfully infectious togetherness that you shouldn't miss.





Loys Egg, *Untitled*, 2009. Mixed media sculpture, 18 x 49 x 16 cm. Copyright Manfred Rats

"The design of reality is unsatisfactory" is a quote by Peter Weibel that hangs framed at Loys Egg's home and has made a deep impression on gallery director Nina Katschnig: "For me, it sums up in a few words why artists and their art are so important for this world."



Oswald Tschirtner, *Humans*, 1997. Felt-tip pen on paper, 200 x 160 cm. Copyright Privatstiftung - Künstler aus Gugging

The idea for the joint autumn exhibition L. E. & O. T. came from Loys Egg, who has known, appreciated and accompanied the *Gugging Artists* for a long time and for

whom the works of Oswald Reischner have a very special charm.

For information, visit galeriegugging.com.

RICCO/MARESCA GALLERY:
*Grant Wallace: Over the Psychic
Radio*

October 20 – December 3, 2022



Grant Wallace, *Through Evolution Comes Revelation*, ca. 1919-25. Ink, gouache, and watercolour on paper, 27.9 x 43.8 cm

Ricco/Maresca is excited to present the first gallery exhibition ever to be mounted of the work of Grant Wallace (1868–1954). [*Over the Psychic Radio*](#) features 31 works from a collection that was recently discovered by the artist's great-grandchildren.

Wallace was born in Hopkins, Missouri, in 1868, one of 9 children. He set out for New York City at age 19, where he studied and developed his interest in the occult.

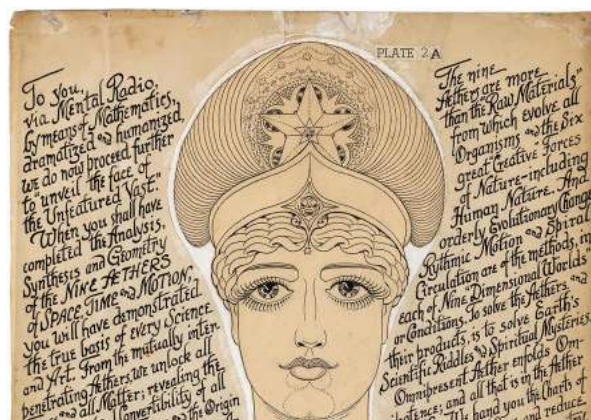


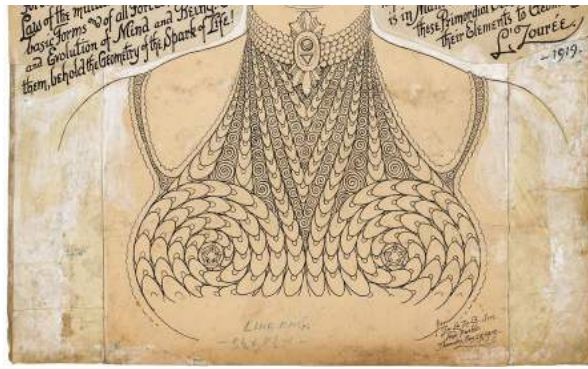


Grant Wallace, *Rebirth on Earth*, ca. 1919-25.
Watercolour, gouache, and ink on paper, 45.7 x 32.4 cm

Wallace eventually made his way to California, where he worked as an editorial illustrator and reporter for the *San Francisco Examiner* and *San Francisco Chronicle*. He graduated to editorial writer for the *Evening Bulletin* and covered the Russo-Japanese War in 1904 among a group of war correspondents that included Jack London and Richard Harding Davis.

Just before World War I, Wallace settled with his family in Carmel, California, where he began experimenting with telepathy, or what he referred to as "mental radio."





Grant Wallace, *Unveil the Face of the Unfeatured Vast*, ca. 1919 - 1925. Ink and gouache on paper, 51.4 x 39.4 cm

Over the next two decades, he channelled his visions and messages into elaborate portraits, texts, and complex diagrams and calculations.

Through his work, Wallace endeavoured to prove reincarnation, extra-terrestrial life, and the coexistence of the living with the dead.

Learn more at riccomaresca.com.

FENIMORE ART MUSEUM:

Mary Michael Shelley – Art of the Everyday

September 21 – December 31, 2022

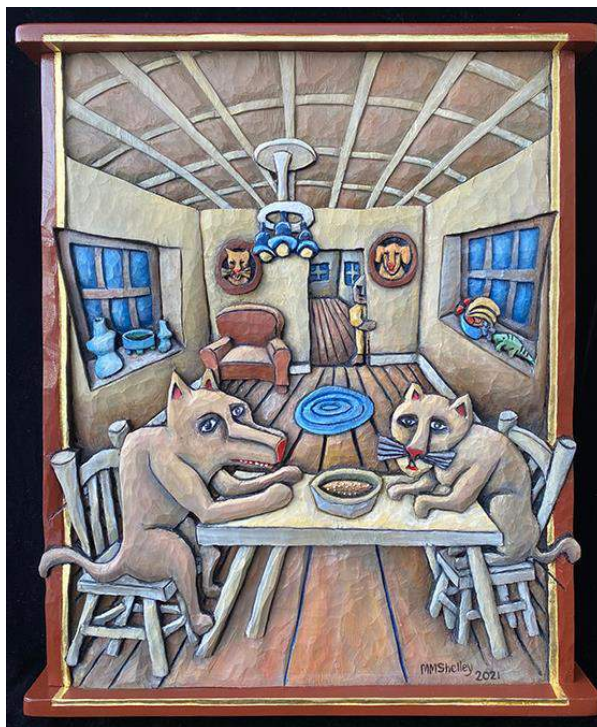
Artist Meet & Greet: October 22,
11am–2pm





Mary Shelley, *Gardening by the Lake*, 2021. Painted woodcarving, 62.23 x 71 x 3.8 cm

[Mary Michael Shelley](#)'s artwork has been described as primitive, traditional, untrained, Americana, whimsical, naïve, eccentric, outsider, visionary, or carved craft. The carved wooden reliefs featured in this exhibition by this Ithaca based artist are a sort of "picture diary" or "picture story" in which Shelley documents life events, emotions, and places important to her life.



Mary Shelley, *Dog and Cat Share a Food Bowl*, 2021. Painted woodcarving, 15.2 x 53.3 x 3.8 cm

With no visual art training, Shelley began to carve at age 23 after being inspired by a gift from her father of a painted woodcarving he had made of her. Now her work is on display at the [Fenimore Art Museum](#), in a beautiful setting on the

shore of Otsego Lake in Cooperstown,
New York.



Mary Shelley, *Birds and Spirit Birds, The World Begins Anew*, 2020. Painted woodcarving, 61 x 76.2 x 3.8 cm

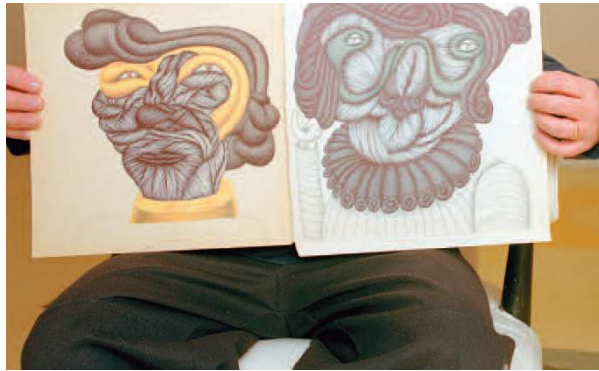
Shelley has always had to supplement her art income with a day job. She worked for twenty years as a carpenter, a house painter, and a sign-maker before returning to school and becoming a social worker in 1990. The activities, movements, and expressions of people are a significant part of her work.

There will be a Meet & Greet event tomorrow, where Shelley will talk with visitors and answer questions in the West Gallery.

ARTIST HIGHLIGHT:

CJ Pyle





CJ Pyle at his home in 2011, photo: Ted Degener

CJ Pyle grew up in a working class family in Richmond, Indiana. His artistic endeavours began when he was at school and he would copy images from his textbooks. Pyle learnt about colour and artistic techniques from library books, but describes himself as having been a daydreamer at school.



CJ Pyle, *Angel Eyes*, 2008. Pen and coloured pencil on inside of LP record jacket, 29.2 x 33 cm

As a teen he became a very good drummer and soon began playing professionally in local rock 'n' roll bands, whilst continuing to draw all the time.

Having been a fan of Blab magazine, Pyle sent in some examples of his work and was immediately commissioned to do a piece for an upcoming Blab show. Soon after, Carl Hammer gave him his first one-person gallery show, which then led to him working with the Ricco/Maresca Gallery.



CJ Pyle, *Little Jane*, 2011. Pencil and ink on verso of book cover, 30.5 x 48.3 cm. Photo courtesy Ricco/Maresca Gallery, NY, and Carl Hammer Gallery, Chicago, IL.

Pyle has developed his own personal style after 30 years of hard work as a working artist, drawing constantly while perpetually pushing his creative boundaries over the years.

CJ Pyle was featured in Raw Vision issue [#76](#).

IN MEMORY OF GUSTAVE CAHOREAU





Gustave Cahoreau, with a selection of his carved sculptures

The art brut sculptor Gustave Cahoreau passed away on Sunday, October 16, at the age of 93. He left behind a lifetime of his sculptures and drawings, present in several public and private collections.





Gustave Cahoreau, untitled woodcarving, 45 x 25 cm, from the Collection d'Art obscur. M.L.

In 2018, he exhibited at the Bergerie du Château in Sainte-Suzanne.

"At 89, I'm still drawing!" he told visitors.



One of Cahoreau's lively drawings. Coloured pencil on Canson paper, 32 x 24 cm, from the Collection d'Art obscur. M.L.

His work has been featured in the Musée de la Collection de l'Art Brut in Lausanne, the Musée d'art-Hors-les-Normes La Fabuloserie in Dicy, the Musée de La Création Franche in Bègles, the Museum of Brut and Singular Art in Montpellier, the LaM Museum in Villeneuve d'Ascq, the Cécile Sabourdy Museum and Gardens in ...

Vicq-sur-Breuilh.

Gustave will be extremely missed and fondly remembered.

Special offer on our back catalogue

Get 10% off when you buy two issues, 15% off for three or four issues and 20% off for five plus issues.

Mix and match between our unique outsider art magazines to add to your collection. Both print and digital copies are available.

[See magazines](#)



Pre-order now: Issue #112





See issue #112

Issue #112 features:

- Outsider art costumes
- Robe De Bonneval
- Egungun of Benin
- Prinzhorn: 100 years
- Hector Pascal Gallo
- Aleksandra Ionowa
- Everal Brown
- Bill Brady

See subscriptions

Raw Vision Ltd, PO Box 44, Watford, WD25 8LN, UK

You're receiving this because you have shown an interest in Raw Vision. Please accept our apologies if you have received this email in error – you will be immediately removed from our mailing list by clicking [Unsubscribe](#).

[Preferences](#) | [Unsubscribe](#)

